

**Support types:**

Bone

Cartilage

Chitin

Endoskeleton

Exoskeleton

Hydrostatic skeleton

Spicules

Xylem

**Support type**

Porifera

---

Cnidaria

---

Annelida

---

Mollusca

---

Arthropoda

---

Echinodermata

---

Chordata: Chondrichthyes

---

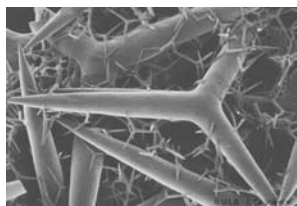
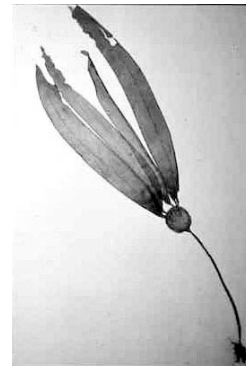
Chordata: Osteichthyes

---

Chordata: Aves

---

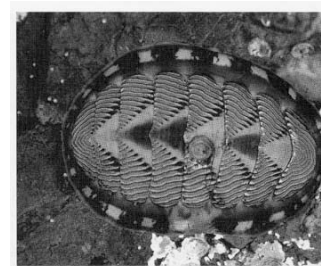
### Support Systems

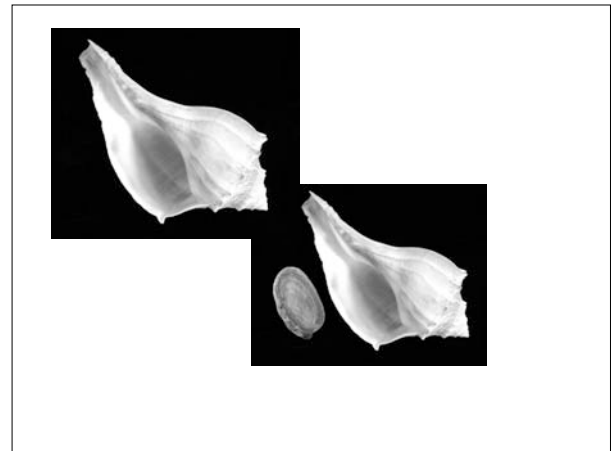
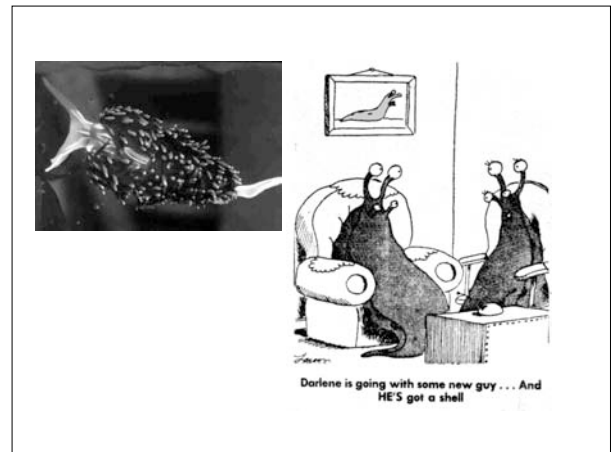
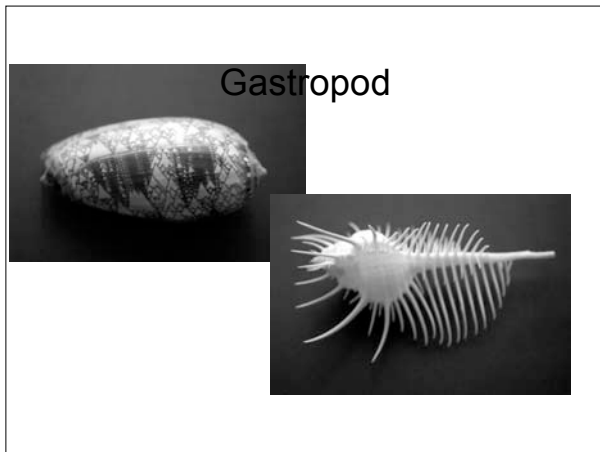


CaCO<sub>3</sub>  
SiO<sub>2</sub>  
Spongin



### Chiton





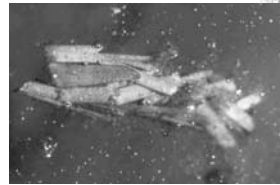
### Scaphopod



### Cephalopod



### Insecta



### Trichoptera



### Lepidoptera



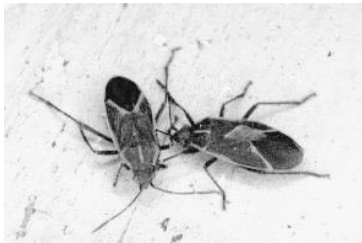
Diptera



Coleoptera



Hemiptera



Hymenoptera



Syrphid



"Bee fly drinking nectar."  
BIOL 215



