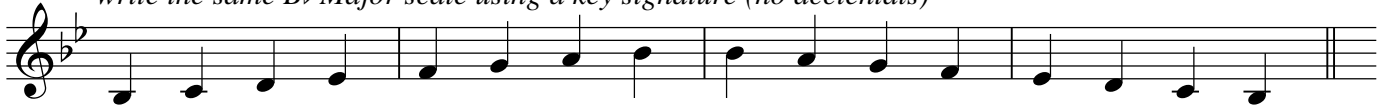


write an ascending and descending B \flat Major scale
 with accidentals (no key signature)



write the same B \flat Major scale using a key signature (no accidentals)



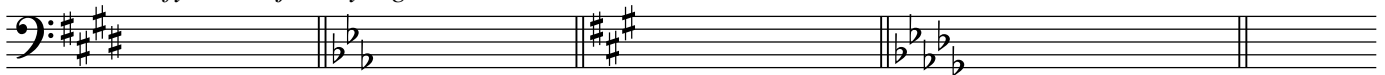
this should be an E major scale.
 Circle the wrong notes



this should be an A \flat major scale.
 Circle the wrong notes



identify the major key signature



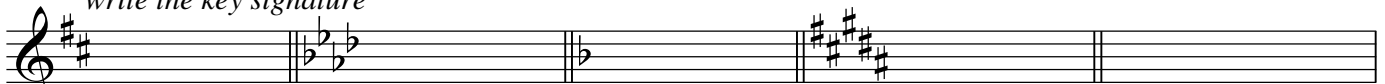
E MAJOR

E \flat MAJOR

A MAJOR

D \flat MAJOR

write the key signature



D MAJOR

A \flat MAJOR

F MAJOR

B MAJOR

write out counting syllables



write out counting syllables



circle bars that have the wrong number of beats

